

Soft contact lens with myopic peripheral defocus

Research has shown that a cornea shaped by the wearing of nocturnal gas-permeable contact lenses for orthokeratology has a much lower progression of myopia than a wearer of glasses or a wearer of traditional contact lenses.

This soft contact lens reproduces the optical effect of modeling without changing the cornea and without having to wear contact lenses at night.

The action takes place through a positive ring external to the pupil which creates the myopic defocus, without modifying the cornea and mainly without altering the vision with aberrations, guaranteeing a precise and defined vision.

FITTING

THE LENSES CAN BE APPLIED BY FOLLOWING TWO METHODS:

FITTING ACCORDING TO SAGITTAL DEPTH

To have an ideal lens / cornea alignment it must be prescribed the lens according to sagittal depth:

- the larger the corneal diameter (HVID), the narrower the base curve must be.
- the smaller the corneal diameter (HVID), the flatter the base curve must be

CLASSIC FITT

In reference to the diameter we want to apply it is added to the meridian più piatto della cornea «K» the flattening factor in the table is flatter than cornea "K":

- «K» (flat meridian) + 0.30 for diameter 13.00 mm
- «K» (flat meridian) + 0.50 for diameter 13.50 mm
- «K» (flat meridian) + 0.70 for diameter 14.00 mm
- «K» (flat meridian) + 0.90 for diameter 14.50 mm
- «K» (flat meridian) + 1.10 for diameter 15.00 mm

CHOICE OF PERIPHERAL POSITIVITY

Depending on the myopia to be corrected following this rule: to contact myopia is added -0.50D and turns into positive.

ES. Myopia -4.00D, positivity to order = (-4.00) + (-0.50) = + 4.50D

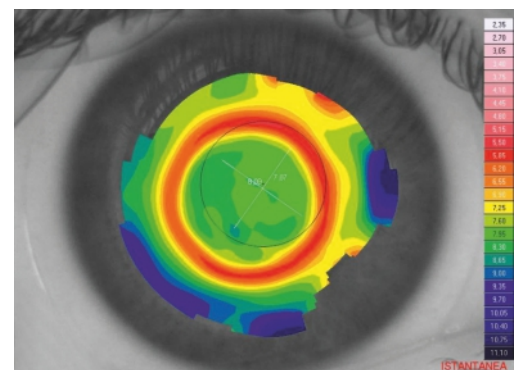
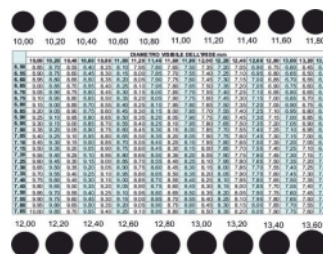
Minimum positive +3.50, maximum +6.00

CHOICE OF THE PUPIL DIAMETER

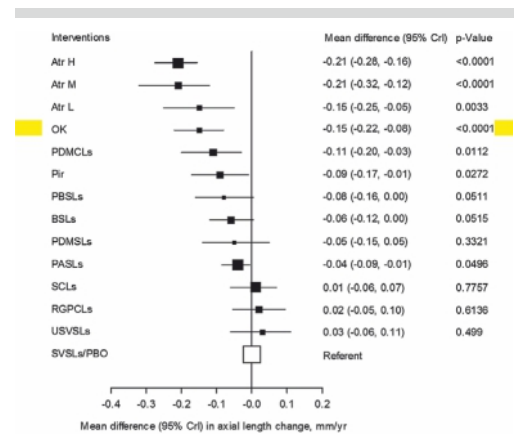
Measure the average pupil diameter:

The diameter where the positivity will start will be the average one.

- +A1 for pupil until to a 4,00 mm
- +A2 for pupil from 4,10 to 5,50 mm
- +A3 for pupil over 5,60 mm



MAPPA myopia(+)



TECHNICAL FEATURES

RANGE RX

Base Curve: from 7.50 to 9.60 step 0.10 mm
 Diameter: from 12.00 to 17.00 step 0.10 mm
 Power: from +5.00 to -25.00 step 0.25D
 Cylinder: until to -7.00 step 0.25D
 Axis: all step di 1°
 Defocus: from +3.50 to +6.00 step 0.25D

RANGE STANDARD

Base Curve: 8.50 mm
 Diameter: 14.40 mm
 Power: from 0.00 to -6.00 step 0.25D
 Defocus: from +3.50 to +6.00 step 0.25D

MATERIAL

These lenses are manufactured in p-GMA / HEMA material. The latest generation of purified glycerin naturally rich in wetting additives, especially structural ones to obtain high stability for the entire duration of wear
 When you wear a lens with this material you have the same Base Curve at both the beginning and the end day without losing water and shape, guaranteeing comfort and safety. Superior performance material of the silicone hydrogel

- BENZ G-4X 54% Dk23 (Hioxifilcon D)
- BENZ G-72HW 72% Dk 42
- SILICONE HYDROGEL 74% Dk75 (Falcon V4)

Soft contact lens with myopic peripheral defocus

Research has shown that a cornea shaped by the wearing of nocturnal gas-permeable contact lenses for orthokeratology has a much lower progression of myopia than a wearer of glasses or a wearer of traditional contact lenses.

This soft contact lens reproduces the optical effect of modeling without changing the cornea and without having to wear contact lenses at night. The action takes place through a positive ring external to the pupil which creates the myopic defocus, without modifying the cornea and mainly without altering the vision with aberrations, guaranteeing a precise and defined vision.



schematic profile **myopia (+)**

PRODUCTION

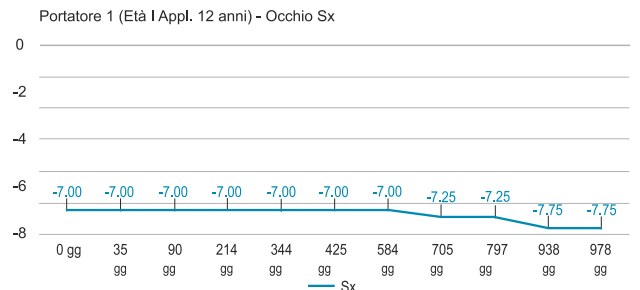
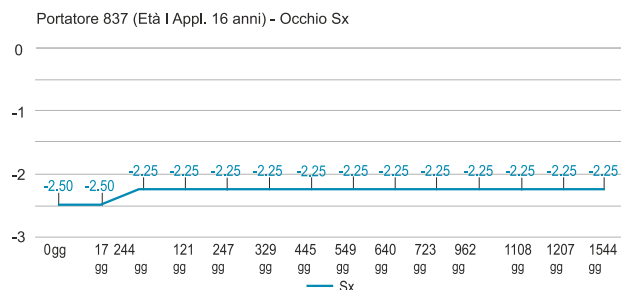
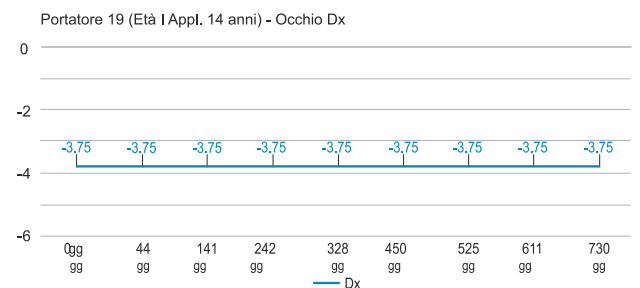
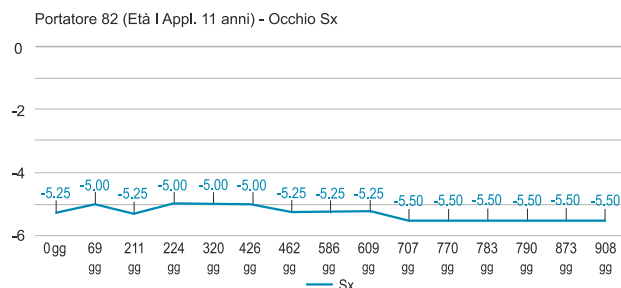
High optical quality contact lens with highly finished surfaces.

MATERIAL

These lenses are manufactured in p-GMA / HEMA material. The latest generation of purified glycerin naturally rich in wetting additives, especially structural ones to obtain high stability for the entire duration of wear

When you wear a lens with this material you have the same Base Curve at both the beginning and the end day without losing water and shape, guaranteeing comfort and safety. Superior performance material of the silicone hydrogel

- BENZ G-4X 54% Dk23 (Hioxifilcon D)
- BENZ G-72HW 72% Dk 42
- SILICONE HYDROGEL 74% Dk75 (Ficon V4)



Made in Italy



BOX:
Monthly in blister, Quarterly in vial
Spheric e Toric